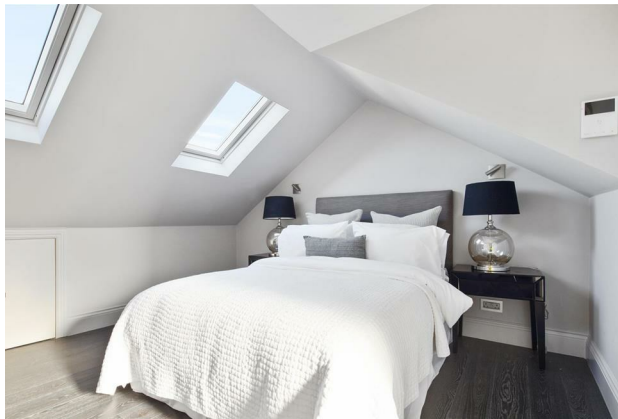




Bathurst Gardens NW10

Parkheath
Sold on Service





Bathurst Gardens, NW10, Asking Price £625,000, Share of Freehold

Brent Band D

- First and second floor duplex apartment
- Rotpunkt German kitchen with Siemens appliances Carrara marble effect quartz worktop
- Anthracite cast iron radiators by Castrads
- VIMAR smart ready energy efficient LED mood lighting and heating
- Lighting by Foscarini, Deisel, Flos, Astro
- Electric Velux with automatic rain sensor
- Underfloor heating in bathrooms
- Fire prevention with mist sprinkler technology
- NEST heating system
- Video entry

Belsize Park
208 Haverstock Hill
NW3 2AG
Sales 020 7431 1234
Lettings 020 7431 3104
nw3@parkheath.com

South Hampstead
8a Canfield Gardens
NW6 3BS
Sales 020 7625 4567
Lettings 020 7644 0800
nw6@parkheath.com

West Hampstead
192 West End Lane
NW6 1SG
Sales & Lettings
Tel 020 7794 7111
192@parkheath.com

Kentish Town
148 Kentish Town Rd
NW1 9QB
Tel 020 7485 0400
kt@parkheath.com

Kensal Rise
54-56 Chamberlayne Rd
NW10 3JH
Tel 020 8960 4845
kensal@parkheath.com

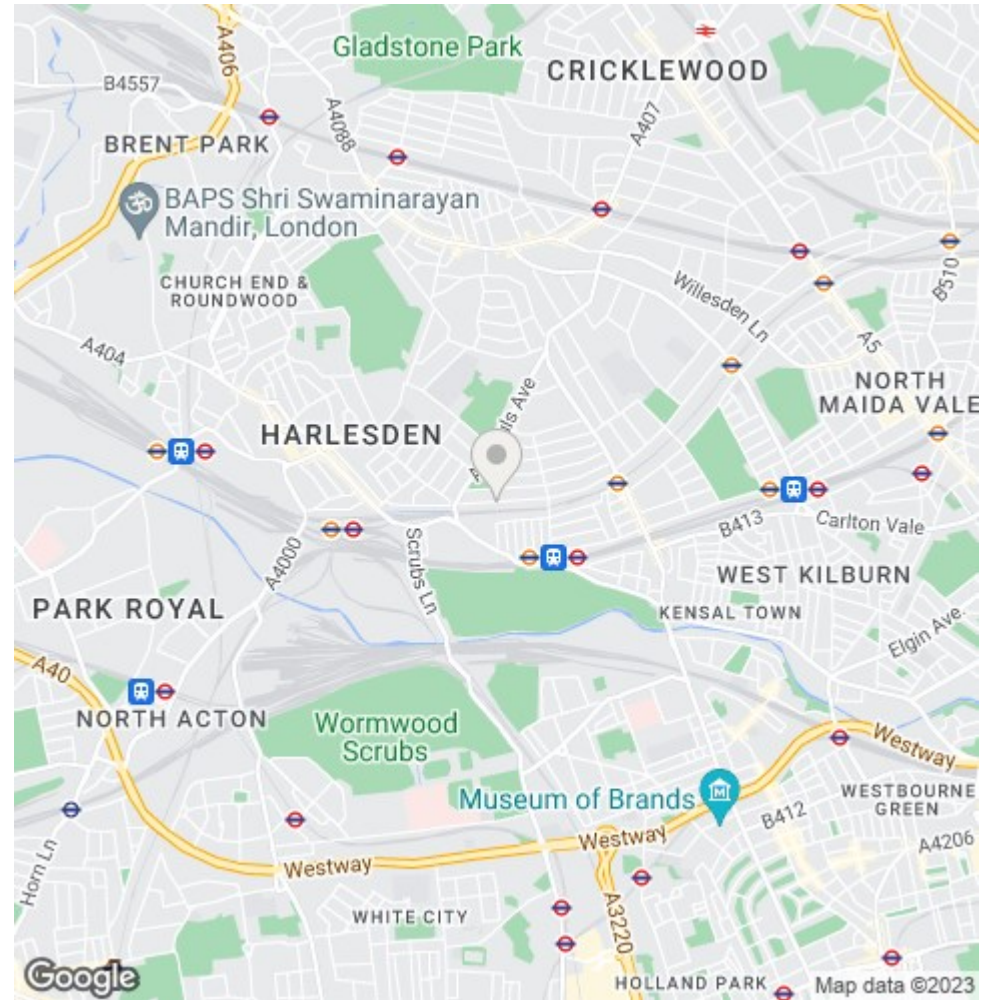
Property Management
148 Kentish Town Rd
NW1 9QB
020 7433 6174
pm@parkheath.com

Parkheath
Sold on Service



APPROX. GROSS INTERNAL FLOOR AREA 1003 SQ FT / 93 SQM
 Ref: Copyright photoplan

Disclaimer: Floor plan measurements are approximate and are for illustrative purposes only. While we do not doubt the floor plan accuracy and completeness, you or your advisors should conduct a careful, independent investigation of the property in respect of monetary valuation



The particulars do not constitute part of an offer or contract. The particulars, including text, photographs and plans, are for the guidance only of prospective purchasers/tenants and must not be relied upon as statements of fact. The descriptions provided therein represent the opinion of the author and whilst given in good faith should not be construed as statements of fact. Nothing in these particulars shall be deemed a statement that the property is in good condition or otherwise or that any services or facilities are in good working order. All measurements are approximate